

2 Ways Electric Control Valve

TYPE 7162E

Description

Two ways electric control valve especially designed for a wide range of fluids like water, thermal oil, steam, nitrogen, natural gas, etc... These electric control valves 7162E offer an optimized and modular solution for industrial process.

Characteristics

Flanges DN15 to DN300 - Threaded ½", ¾", 1", 1½", 2"

Material: Steel 1.0619 – A 216 WCB/WCC

Steel A 217 WC6

Stainless steel 1.4408 – A 351 CF8M

Cast iron 5.3105/GJS 400-18

Flanges ISO PN16, 25, 40 – Class 150, 300, 600

(=%) / Parabolic or perforated cone

Design ANSI B16-34 PN50/PN100

Kvs 0,1 to 1430

Temperature range : - 60°C à + 400°C

PTFE/Graphite

Standard turndown: between 30:1 and 40:1 depending of type and seat diameter.

High turndown: 40:1...50:1



Options

Flanges with grooves

Graphite packing

Soft seal cone

Stainless steel bellows

Perforated cone / High temperature cover

Stellited seat/cone / SS Hardened seat cone 1.4122

Linear characteristics

BW ends

Piloted cone (type 7162 CPE)

High turndown

Perforated cone

Balanced cone

Actuator

Electric actuators types SBA06 / 08 / 45 / 80 / 200 – SDL50 / 100

Power supply : 24V, 115V, 230V, 400V

Signals : 0/4 – 20mA 0-10V – 3 points

See the electric actuator data sheet

Particular advantages

7162E control valves are designed and built in France, ensure you an excellent reliability related to exceptional performance.

How to order

7162E DN80 PN40 KVs 100 Actuator SBA80

Certification

DESP; ATEX II 2 G/D; ISO9001 / PED; ATEX II 2 G/D; ISO9001

PN/Class / Combination DN – Material – PN/Class

Class PN DN	Steel							Stainless steel					Cast iron
	1.0619		A 216 WCB		A 217 WC6			1.4408		A 351 CF8M			EN GJS 400-18
	PN16	PN40	Class 150	Class 300	Class 150	Class 300	Class 600	PN16	PN40	Class 150	Class 300	Class 600	PN16
15	✓	✓	✓	✓				✓	✓	✓	✓		
20	✓	✓	✓	✓				✓	✓	✓	✓		
25	✓	✓	✓	✓	✓	✓	✓	✓	✓	✓	✓	✓	
32	✓	✓						✓	✓				
40	✓	✓	✓	✓	✓	✓	✓	✓	✓	✓	✓	✓	
50	✓	✓	✓	✓	✓	✓	✓	✓	✓	✓	✓	✓	
65	✓	✓						✓	✓				
80	✓	✓	✓	✓	✓	✓	✓	✓	✓	✓	✓	✓	
100	✓	✓	✓	✓			✓	✓	✓	✓	✓	✓	
125	✓	✓						✓	✓				
150	✓	✓	✓	✓				✓	✓	✓	✓		
200	✓	✓	✓	✓				✓	✓	✓	✓		
250	✓	✓	✓	✓				✓	✓	✓	✓		✓
300	✓	✓	✓	✓				✓	✓	✓	✓		✓

Cone TYPES

Parabolic cone

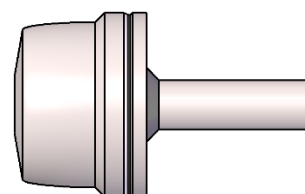
Characteristics : =%

Material : 1.4404 – stellite option

Sealing : Metallic tight

Tightness : Classe IV (<0.01% Kvs) ANSI B16-104/ FCI 70-2-2006 (EN 60534-4)

Applications : All fluids



CLAPET PARABOLIQUE
PARABOLIC CONE

Perforated cone (option)

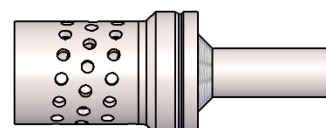
Characteristics : =% or linear in option

Material : Inox / Stainless steel 1.4404,

Sealing : Metallic tight

Tightness : Classe IV (<0.01% Kvs) ANSI B16-104/ FCI 70-2-2006 (EN 60534-4)

Applications : Gas : Noise reduction
Liquide : Cavitation,
flashing, noise reduction



CLAPET PERFORÉ
PERFORATED CONE

Parabolic cone with softseal (option)

Characteristics : =%

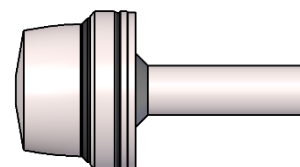
Material : Stainless steel

Tightness : Soft seal PTFE/SS

Tightness : Classe VI (0.3*ΔP* leakage rate)

ANSI B16-104 / FCI 70-2-2006 (EN 60534-4)

Applications : All fluids up to 220°C



CLAPET PARABOLIQUE ET PORTÉE SOUPLE
PARABOLIC CONE & SOFT SEAL

Packing

PTFE/Graphite

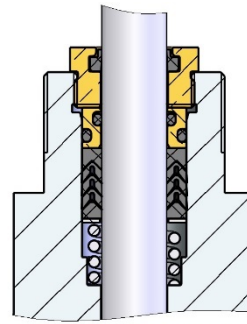
Chevrong ring with spring

Max temperature : 250°C,

Max pressure : 100 bar

Application : Water, steam, oil, gaz...

See pressure/temperature charts



GARNITURE PTFE CHARGE GRAPHITE
PTFE WITH GRAPHITE PACKING

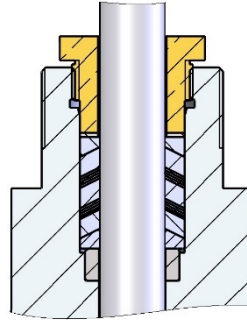
Pure graphite (option)

Max temperature : 400°C,

Max pressure : 100 bar

Application : Water, steam, etc...

See pressure/temperature charts



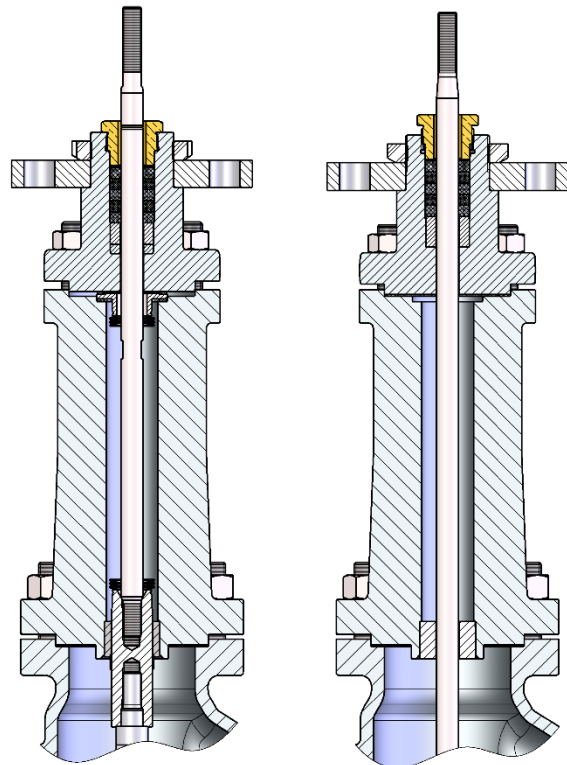
GARNITURE GRAPHITE
PURE GRAPHITE PACKING

Stainless steel bellows with graphite safety stuffing box (option)

Max temperature : 350°C,

Max pressure : 20 bar

See pressure/temperature charts



STAINLESS STEEL BELLOWS SEALING

HIGH TEMPERATURE INSULATION

High temperature insulation (option)

Max temperature : 400°C,

Max pressure : 100 bar

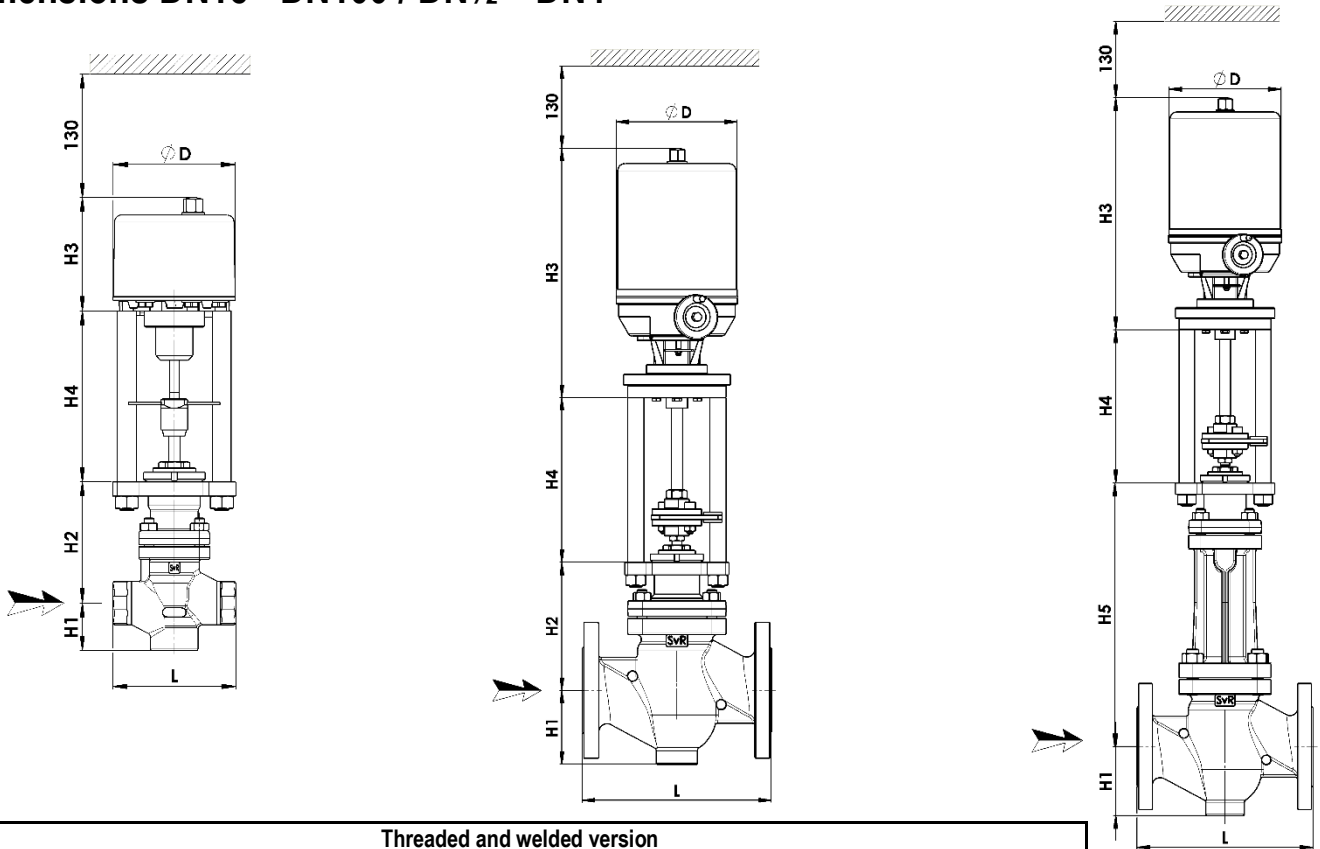
See pressure/temperature charts

Maxi differential pressure 7162EQ

		Valeur/Value KVS					Servomoteur/Actuator force (kN)										
Course / Stroke (mm)	Øsiège / Seat (mm)	DN					4,5	6	7	8	12	15					
		80	100	125	150	200	SBA 45.3	SBA 45.4	SDL 50	SBA 80.2	SBA 80.3	SDL 100					
								Différentiel de pression Differential pressure (bar)									
30	65	63					40	40	40								
40		51															
30	80	100	100	100													
40		72	77	79													
40	100		160	160	160												
50			120	129	132												
40	125			202	217	227											
50				155	162	166											
50	150				305	357	32										
60					350	390											
					240	255											
50	200					480	24		40			40					
60						340											
						520											
80						600											
					423					40							

*The values in **bold** are for perforated cones

Dimensions DN15 - DN100 / DN1/2" - DN4



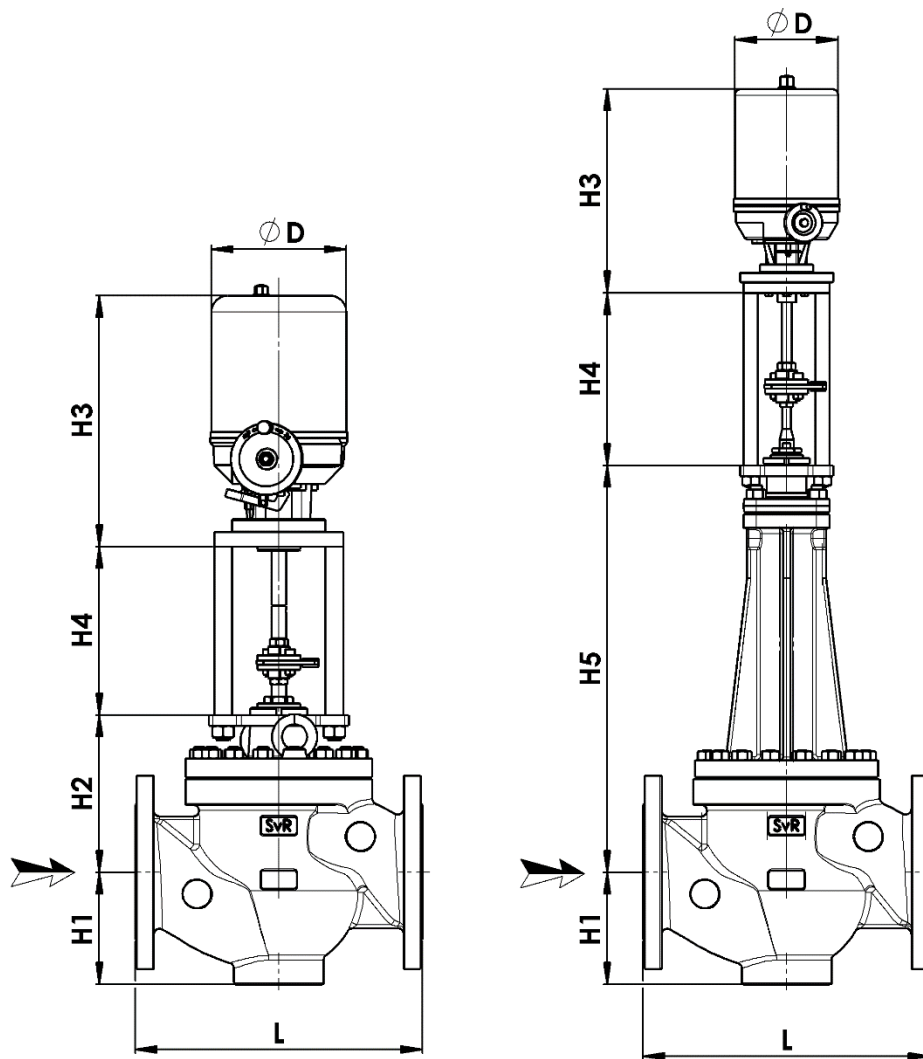
Threaded and welded version									
DN	1/2"	3/4"	1"	1" 1/4	1" 1/2	2"	-	-	-
L	130	130	130	200	200	200	/	/	/
H1	60	60	60	90	90	90	/	/	/
H2	128	128	128	156	156	156	/	/	/
H5	320	320	320	346	346	346	/	/	/
Mass (kg)	5	5	5	11,5	11,5	11,5	/	/	/
Flanges version									
DN	15	20	25	32	40	50	65	80	100
L (ISO PN16/25/40)	130	150	160	180	200	230	290	310	350
L (ANSI Class 150 RF)	184	184	184	/	222	254	/	298	353
L (ANSI Class 300 RF)	190	194	197	/	235	267	/	318	368
L (ANSI Class 600 RF)	/	/	210	/	251	286	/	337	394
L (ANSI Class 150 RTJ)	/	/	197	/	235	267	/	311	365
L (ANSI Class 300 RTJ)	201	207	210	/	248	283	/	333	384
L (ANSI Class 600 RTJ)	/	/	210	/	251	289	/	340	397
H1	48	53	60	70	85	90	100	120	145
H2 (ISO PN16/25/40 + ANSI Class 150/300)	128	128	133	138	160	156	162	178	198
H2 (ANSI Class 600)	/	/	142	/	169	172	/	243	286
H5 (ISO PN16/25/40 + ANSI Class 150/300)	320	320	320	327	351	346	343	353	366
H5 (ANSI Class 600)	/	/	240	/	265	260	/	343	386
Mass (kg)	5,5	6,5	8,5	10	14	17,5	23	32	47

All dimensions in mm

	SBA 06	SBA 08	SBA 45	SBA 80	SDL 50
ØD	129	173	145	188	182
H3	99	175	252	304	307
H4	151	200	240	210	165
Mass (kg)	2	X	8	13	8

All dimensions in mm

Dimensions DN125 - DN200



DN	125	150	200	
L (ISO PN16/40)	400	480	600	
L (ANSI Class 150 RF)	400*	451	480*	543
L (ANSI Class 300 RF)	418*	473	500*	568
L (ANSI Class 150 RTJ)	/	464	556	
L (ANSI Class 300 RTJ)	/	489	584	
H1	156	177	239	
H2	219	222	242	
H5	567	577	601	
Mass (kg)	77	105	253	

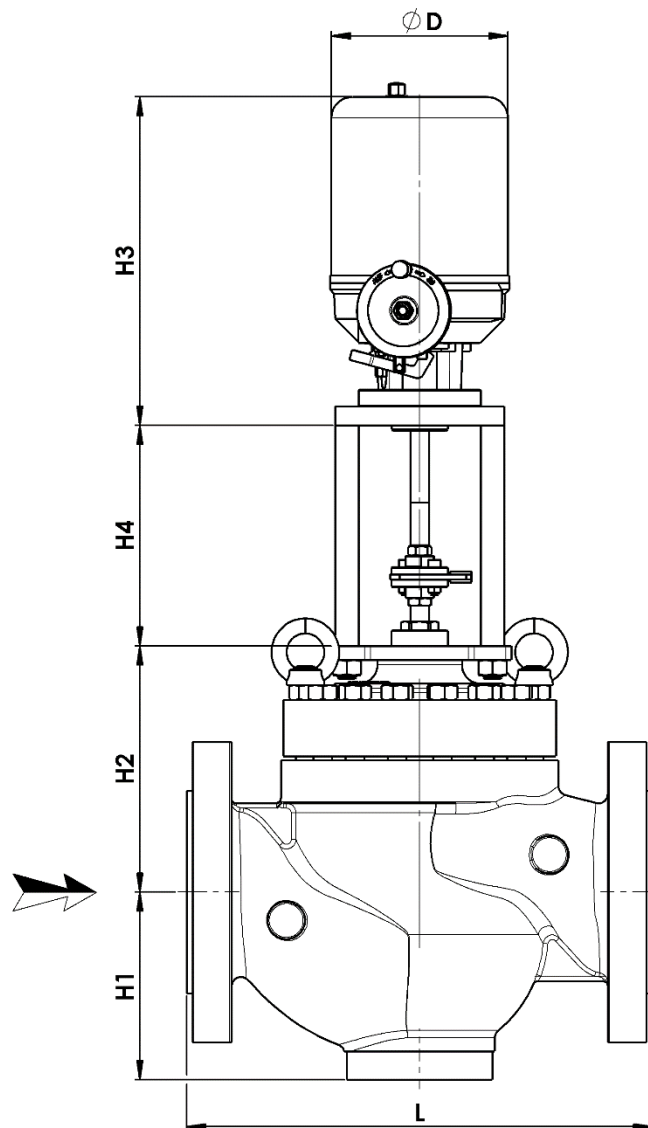
* Special execution

All dimensions in mm

	SBA 80	SDL 100	SBA 200
Ø D	188	182	216
H3	304	272	377
H4	235	235	235
Mass (kg)	13	20	19

All dimensions in mm

Dimensions DN125 - 200 balanced



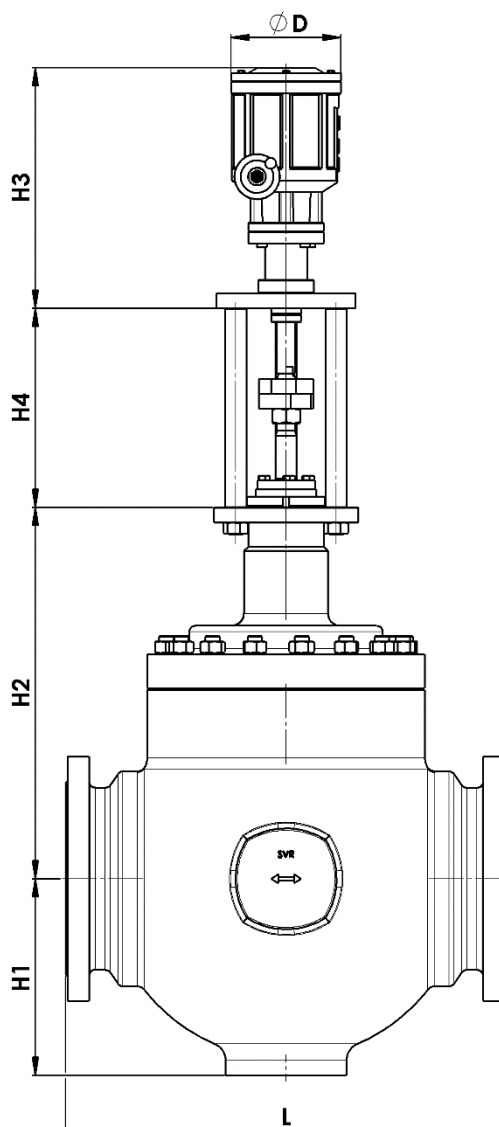
DN	125	150	200
L (ISO PN16/40)	400	480	600
L (ANSI Class 150 RF)	400*	451 480*	543 600*
L (ANSI Class 300 RF)	418*	473 500*	568 614*
L (ANSI Class 150 RTJ)	/	464	556
L (ANSI Class 300 RTJ)	/	489	584
H1	156	177	239
H2	250	262	306
Mass (kg)	100	150	280

* Special execution
All dimensions in mm

	SBA 45	SBA 80	SDL 100
$\varnothing D$	145	188	182
H3	252	304	272
H4	235	235	235
Mass (kg)	8	13	20

All dimensions in mm

Dimensions DN250 – DN300



DN	250	300
L (ISO PN16/40)	730	850
L (ANSI Class 150 RF)	730	850
L (ANSI Class 300 RF)	730*	850*
H1	326	380
H2	626	617
H4 (max)	350	350
Mass (kg)	345	525

* L de 846 class 300 DN300 en option

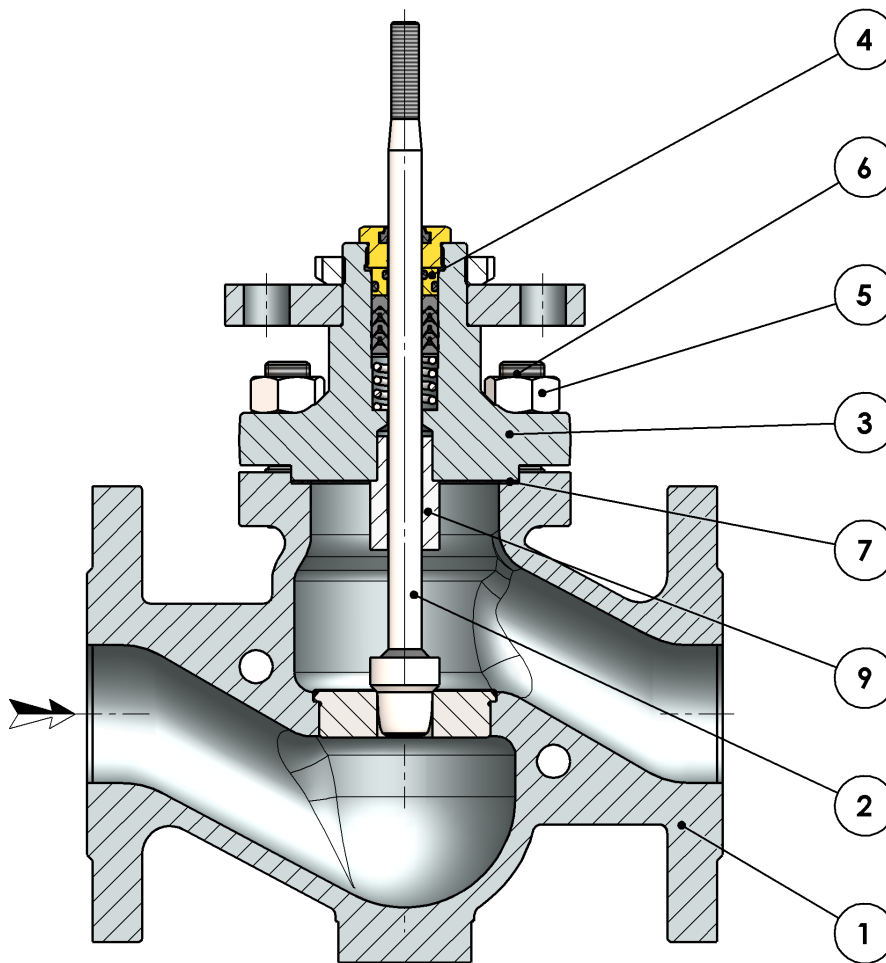
* L de 708 class 300 DN250 en option

All dimensions in mm

	SBA 80	SDL 100	SBA 200
Ø D	188	182	216
H3	304	390	377
H4	280	300	320
Mass (kg)	13	8	19

All dimensions in mm

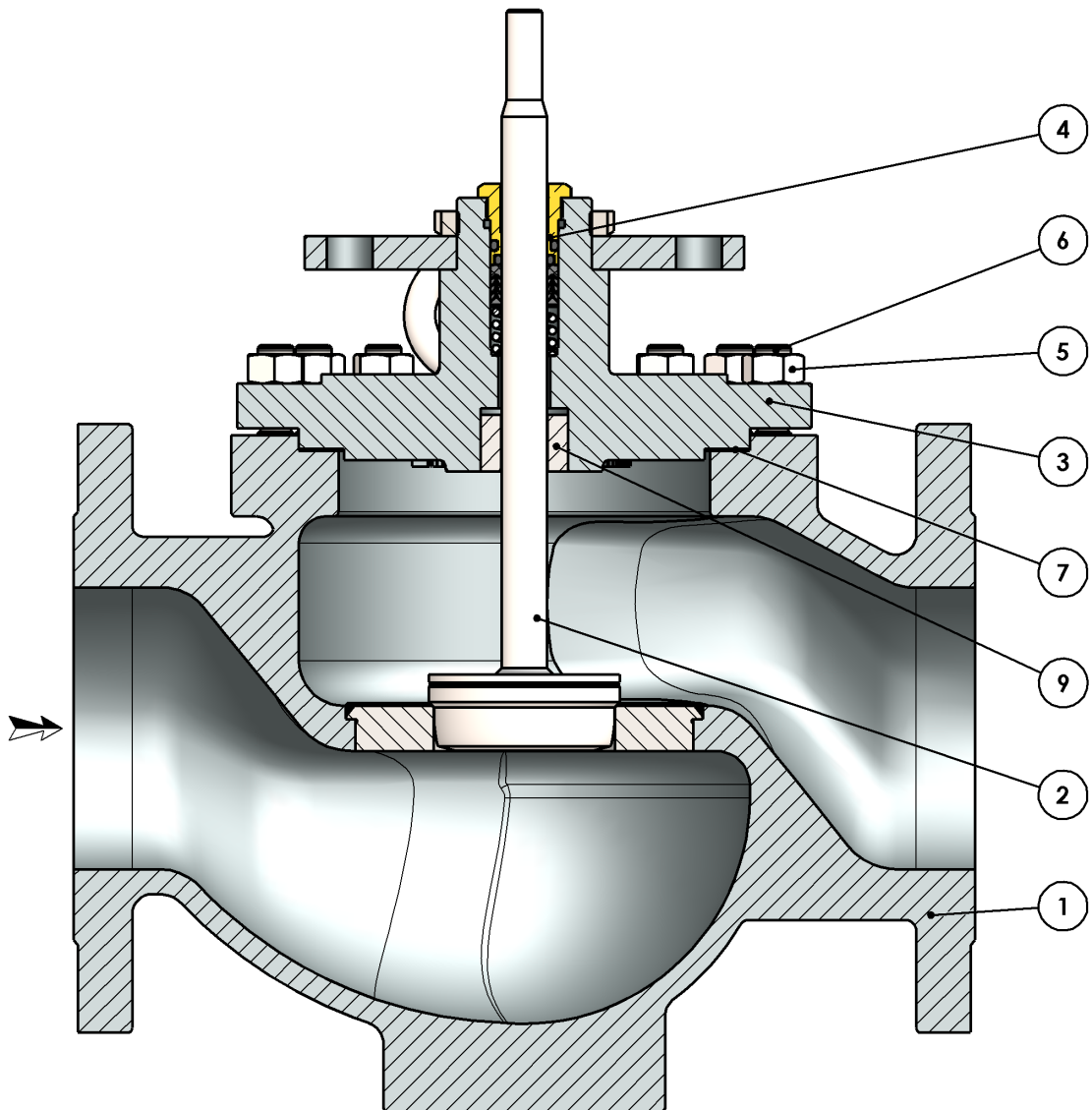
Part list – DN15 - DN100



Rep./Item	Description	Matière / Material
1	Body	1.0619- A216 WCB - 1.4408- A351 CF8M – A217 WC6
2	Cone	Stainless steel
3	Cover	1.0570 - 1.0619 - WCB / 1.4404 - 1.4408 - CF8M
4*	Stuffing box	Brass - Stainless steel
5	Nut	8.8 / A2-70 / A193 B7
6	Stud	8.8 / A2-70 / A193 B7
7*	Gasket	Graphite
9	Guiding bush	1.4542

* Spare parts

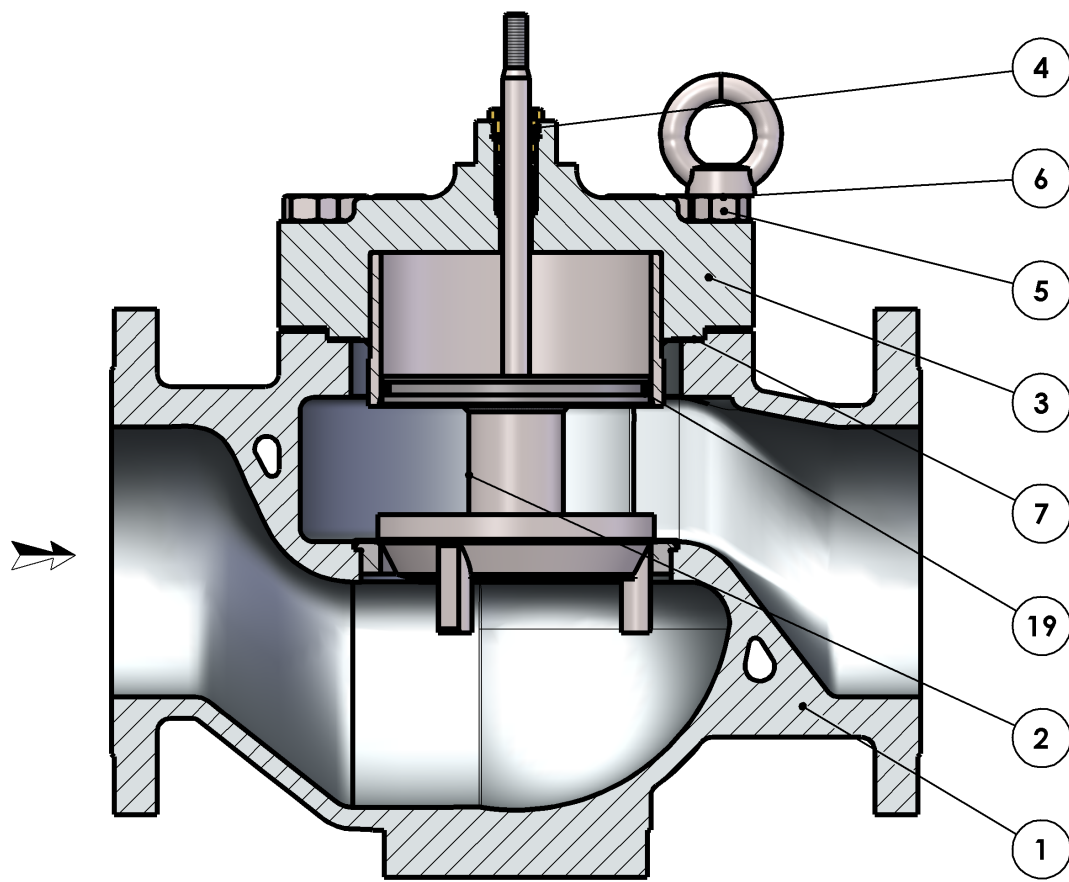
Part List – DN125 – DN200



Rep./Item	Description	Material
1	Body	1.0619- A216 WCB - 1.4408- A351 CF8M – A217 WC6
2	Cone	1Stainless steel
3	Cover	1.0570 - 1.0619 - WCB / 1.4404 - 1.4408 - CF8M
4*	Stuffing box	Brass - Stainless steel
5	Nut	8.8 / A2-70 / A193 B7
6	Stud	8.8 / A2-70 / A193 B7
7*	Gasket	Graphite
9	Guiding bush	1.4542

* Spare parts

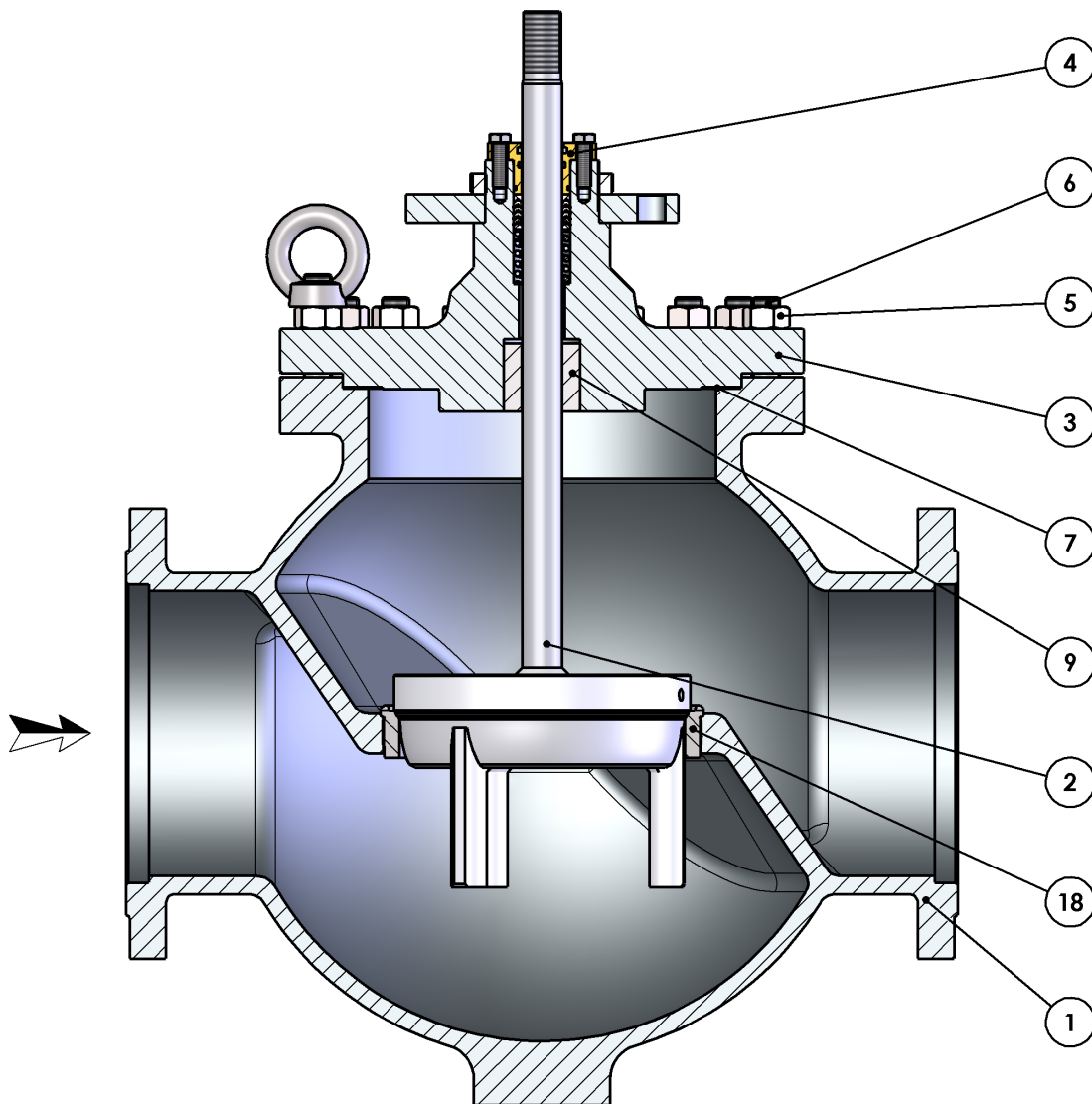
Part List - DN125 - 200 Balanced



Rep./Item	Description	Material
1	Body	1.0619- A216 WCB - 1.4408- A351 CF8M – A217 WC6
2	Cone	Stainless steel
3	Cover	1.0570 - 1.0619 - WCB / 1.4404 - 1.4408 - CF8M
4*	Stuffing box	Brass - Stainless steel
5	Nut	8.8 / A2-70 / A193 B7
6	Stud	8.8 / A2-70 / A193 B7
7*	Gasket	Graphite
19*	Gasket EQ	PTFE / 1.4310

* Spare parts

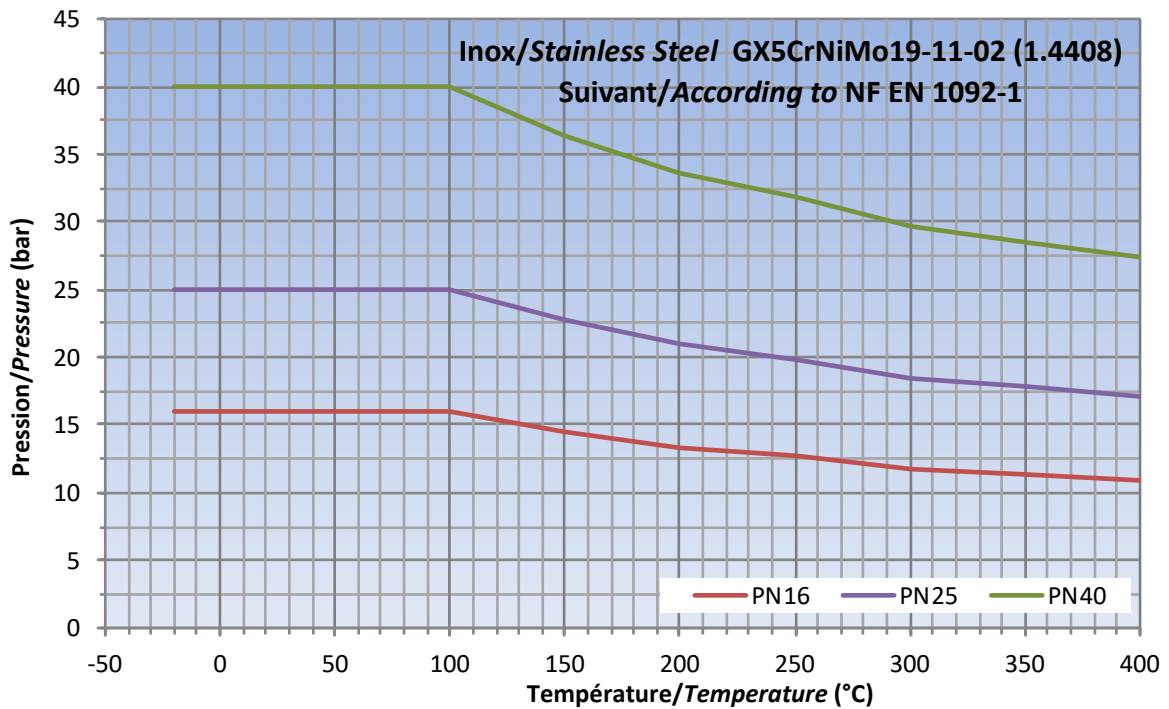
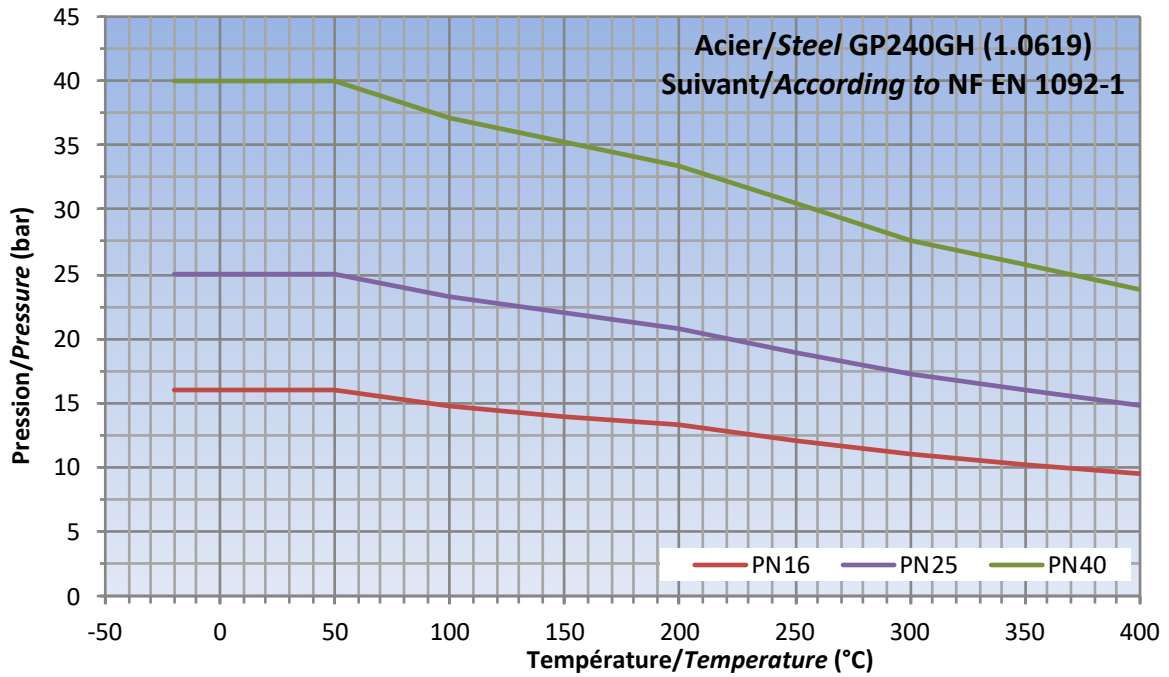
Part List – DN250 – DN300



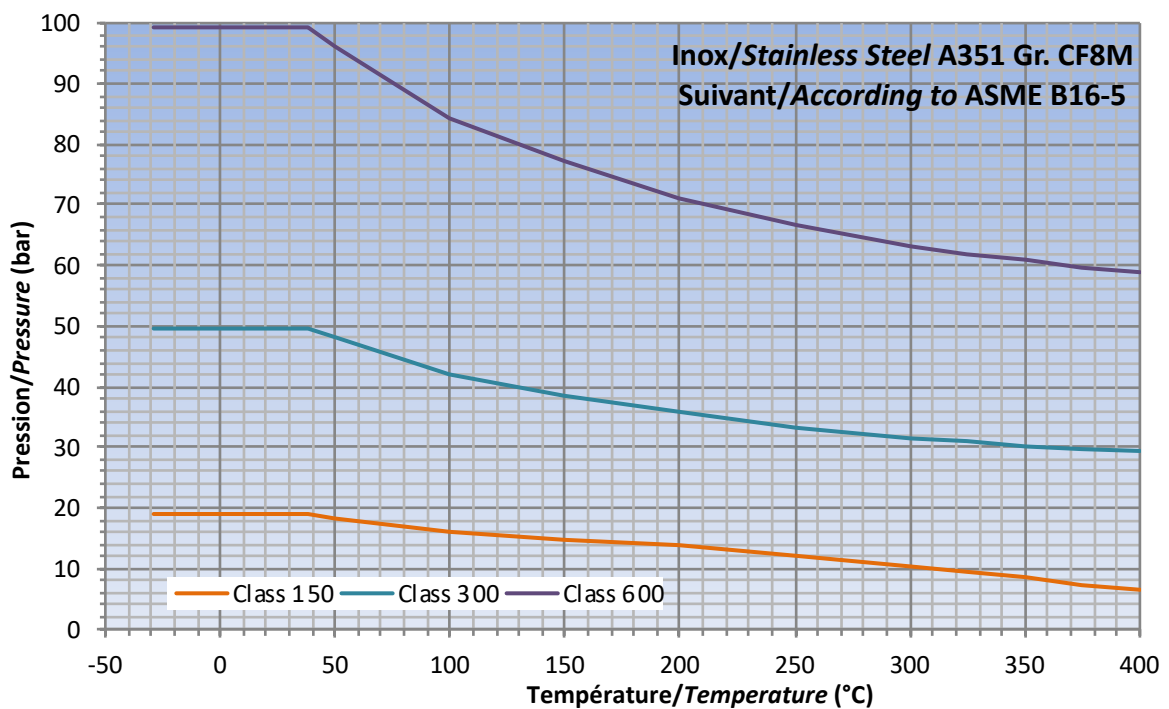
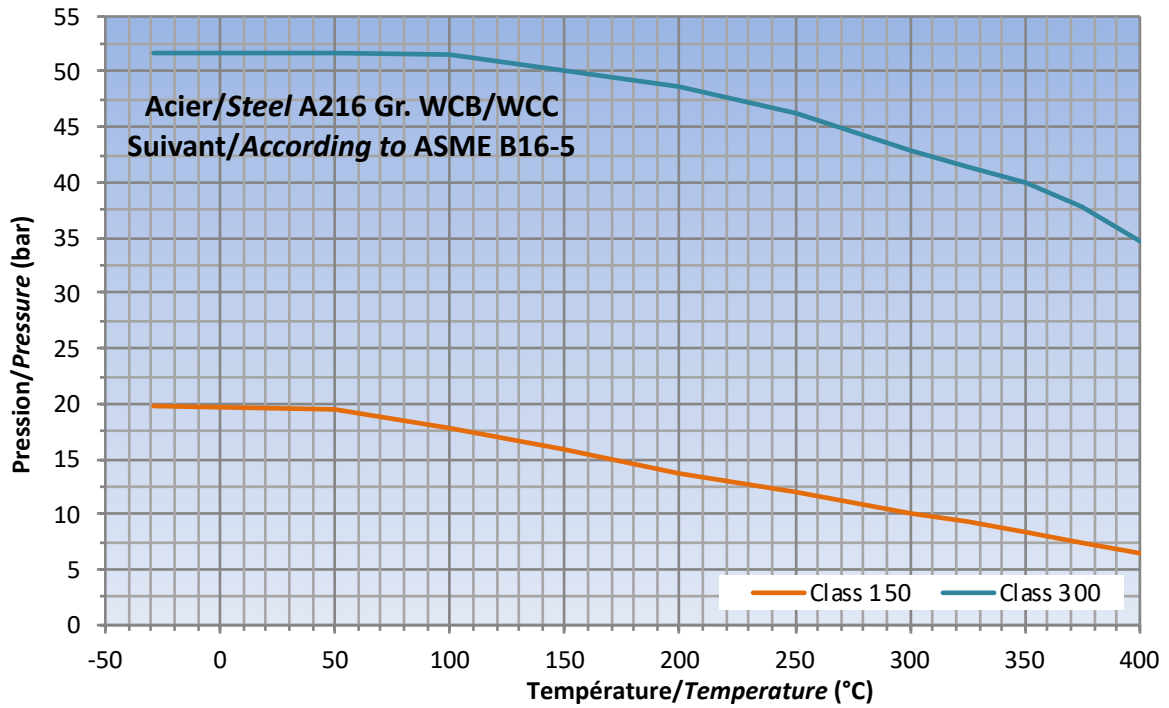
Rep./Item	Description	Material
1	Body	1.0619- A216 WCB - 1.4408- A351 CF8M – A217 WC6
2	Cone	Stainless steel
3	Cover	1.0570 - 1.0619 - WCB / 1.4404 - 1.4408 - CF8M
4*	Stuffing box	Brass - Stainless steel
5	Nut	8.8 / A2-70 / A193 B7
6	Stud	8.8 / A2-70 / A193 B7
7*	Gasket	Graphite
9	Guiding bush	1.4542
18	Seat	Stainless steel

* Spare list

Pressure -Temperature Charts



Pressure -Temperature Charts



Pressure -Temperature Charts

